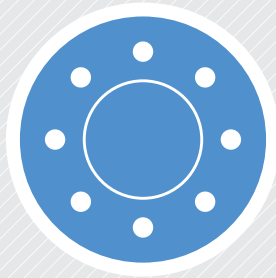



# JURUPA USD FACILITIES MASTER PLAN

STEERING COMMITTEE WORKSHOP 02



---

October 16, 2019



Nelson Henderson

//// THE TRUE MEANING IN LIFE

**IS TO PLANT TREES UNDER WHOSE SHADE YOU WILL NOT EXPECT TO SIT**



# GUIDING PRINCIPLES FOR DESIGN

## WHOLECHILD

Our schools will nurture and encourage students by providing them the opportunity to unlock their potential academically, socially and emotionally so they can succeed here or anywhere.

## SAFETY

In order for learning to occur, learning environments must be safe and secure. Our schools must incorporate the best safety systems so that students and staff feel safe, secure, welcome and protected.

## OUTDOOR CONNECTIONS TO THE ENVIRONMENT

Learning is without limits. Learning will extend beyond classroom walls, connecting our students to our community, and providing diverse settings for learning. We will provide a variety of outdoor spaces that are natural, flexible and engaging for learning and socialization.

## SOCIAL SKILLS & COMMUNICATION

Our schools promote positive social skills and communication by focusing on kindness, respect, and responsibility. Every student is known well, respected and appreciated. Differences are welcomed and respected, and emotional and intellectual needs are met.

## SUSTAINABILITY

Our students and staff are responsible, environmental citizens, engaging in everyday behavior that results in a reduction of energy use. Schools integrate sustainability awareness into their curriculum, empowering students to implement and monitor sustainability initiatives in their schools.

## INNOVATION

Our schools will be adaptable to best support the ever-changing needs of our students and staff. We support our student's innovative thinking and the effective integration of technology into learning and curriculum.



# PRICIPIOS DE SEGUIR PARA EL DISEÑO

## ABILIDADES SOCIALES Y DE COMUNICACION

Nuestras escuelas promueven habilidades sociales positivas y comunicación centrándose en la bondad, el respeto y la responsabilidad. Cada estudiante es conocido bien, respetado y apreciado. Las diferencias son bienvenidas y respetadas, y se satisfacen las necesidades emocionales e intelectuales.

## NIÑO COMPLETO

Nuestras escuelas nutrirán y alentarán a los estudiantes brindándoles la oportunidad de desbloquear su potencial académica, social y emocionalmente para que puedan tener éxito aquí o en cualquier lugar.

## SOSTENIBILIDAD

Nuestros estudiantes y personal son responsables, ciudadanos ambientales, participando en el comportamiento diario que resulta en una reducción del uso de energía. Las escuelas integran la conciencia de sostenibilidad en su plan de estudios, empoderando a los estudiantes para implementar y monitorear iniciativas de sostenibilidad en sus escuelas.

## SEGURIDAD

Para poder asegurarnos de que se pueda aprender, las instalaciones y contextos de aprender tienen que ser seguros. Nuestras escuelas deben incorporar los mejores sistemas de seguridad para que los estudiantes se sientan seguros, bienvenidos y protegidos.

## CONNECCIONES A EL AIRE LIBRE

El aprendizaje no tiene límites. Nuestros estudiantes aprenderán mas alla del aula, con conexiones a la comunidad, y con contextos diversos para aprender. Proveremos contextos que sean naturales, flexibles, y atractivos para aprender y socializar.

## INOVACION

Nuestras escuelas serán adaptables para apoyar mejor las necesidades cambiantes de nuestros estudiantes y personal. Apoyamos el pensamiento innovador de nuestros estudiantes y la integración efectiva de la tecnología en el aprendizaje y el currículo.

# Timeline

**District Notice to Proceed**

## 1. PREPARE

- Review and Evaluate
- Data Collection

## 2. ANALYZE

- Demographic Analysis  
Facility Needs Assessments
- Campus Analysis & Visits
  - M&O Meetings
  - Community Outreach

## 3. FRAME

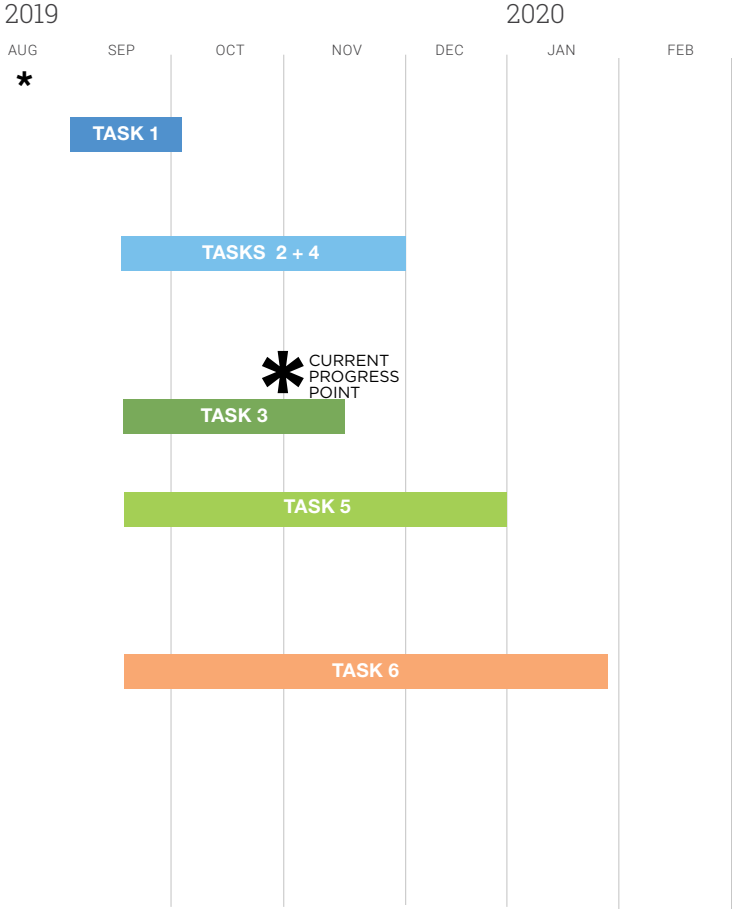
- Educational Specifications

## 4. EXPLORE

- Facilities Equity Analysis
- Develop Cost Estimates/Refine Options
  - Develop Funding Strategies
  - Develop Project List and Start Prioritization

## 5. RECOMMEND

- Develop Implementation Plan
- Finalize Deferred Maintenance
  - Develop LRFMP Document
  - Submit Initial Draft LRFMP for Review/Comment
  - Draft LRFMP Presentation to BOE
  - Submit Final Draft LRFMP
  - Final LRFMP Presentation to BOE
  - BOE Vote to Pursue November 2020 GO Bond



S  
S  
E  
C  
P  
R  
P

2019  
AUG



**1. PREPARE**



**2. ANALYZE**



**3. FRAME**



**4. EXPLORE**



**5. RECOMMEND**

2020  
JAN

# P R E P A R E

CORE  
LEADERSHIP  
KICK OFF  
MEETING  
(8/8)

AS BUILTS / DATA  
COLLECTION

CONTRACT  
AWARD  
/ NTP  
(8/12)

TEAM KICK  
OFF MEETING  
(8/16)

S  
S  
E  
C  
O  
R  
R  
A

2019  
AUG



**1. PREPARE**



**2. ANALYZE**



**3. FRAME**



**4. EXPLORE**



**5. RECOMMEND**

2020  
JAN

# A N A L Y Z E

ANALYZE  
EXISTING  
DISTRICT  
DATA

DOCUMENT  
ALL SITE  
INFORMATION

KICK OFF  
MEETING  
W/ M&O  
(9/4)

6 COMMUNITY  
OUTREACH  
MEETINGS  
(9/10-9/19)

ANALYZE  
ENROLLMENT /  
DEMOGRAPHIC  
INFORMATION  
-CONSERVATIVE

CAMPUS ANALYSIS  
& INTERVIEWS W/  
SCHOOL STAFF TO  
IDENTIFY ISSUES  
(8/19 -9/5)

ASSESS  
BUILDING & SITE  
CONDITIONS  
-EMG FCA  
REPORTS  
(8/20 -10/4)

STEERING  
COMMITTEE  
WORKSHOP #1  
(9/4)

START POTENTIAL  
FUNDING ANALYSIS  
TO DETERMINE  
ELIGIBILITY

S

S

E

C

O

R

R



# FACILITY CONDITION ASSESSMENT

A Bureau Veritas Group Company

## HMC ARCHITECTS

3546 Concourse Street  
Ontario, California 91764  
Andrew Thompson



## TROTH STREET ELEMENTARY SCHOOL

5565 Troth Street  
Jurupa Valley, California 91752

### PREPARED BY:

EMG | A Bureau Veritas Company  
10461 Mill Run Circle, Suite 1100  
Owings Mills, Maryland 21117  
800.733.0660  
[www.emgcorp.com](http://www.emgcorp.com)

### EMG CONTACT:

Mark Surdam  
Program Manager  
800.733.0660 x6251  
[msurdam@emgcorp.com](mailto:msurdam@emgcorp.com)

### EMG PROJECT #:

139069.19R000-001.354

### DATE OF REPORT:

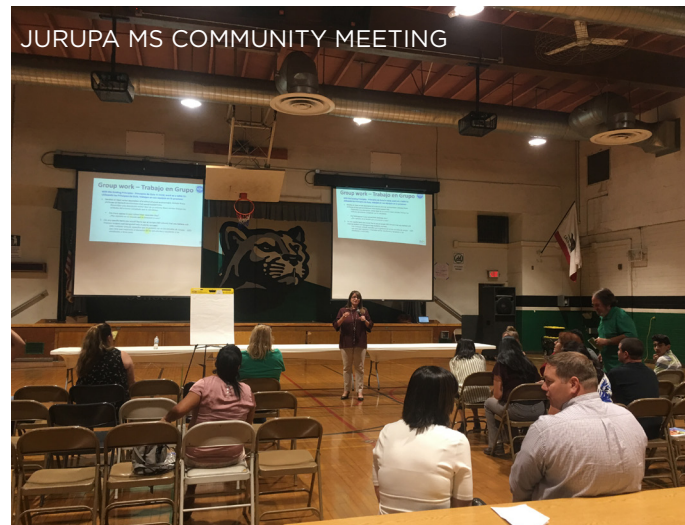
August 28, 2019

### ON SITE DATE:

August 20, 2019



JURUPA MS CAMPUS VISIT



JURUPA MS COMMUNITY MEETING

DOCUMENTATION



engineering | environmental | capital planning | project management | A Bureau Veritas Group Company



[www.EMGcorp.com](http://www.EMGcorp.com) | 800.733.0660

2019  
AUG



1. PREPARE



2. ANALYZE



3. FRAME



4. EXPLORE



5. RECOMMEND

2020  
JAN

# FRAME

(2) ED SPECS MEETINGS (9/1 -9/2)

DEVELOP ED SPECS DRAFT

**STEERING COMMITTEE WORKSHOP #2 (10/16)**

START WRITING FMP SECTIONS & DEVELOPING SITE PLANS

START DEVELOPMENT OF INTERACTIVE WEBSITE

SITE CAPACITY STUDY UTILIZING DEMOGRAPHICS STUDY & ED SPECS

STEERING COMMITTEE APPROVES ED SPECS TO SUBMIT TO BOARD FOR ACCEPTANCE

FINAL COMMENTS FROM STEERING COMMITTEE ON ED SPECS

**DUE 11/1**

S  
S  
E  
C  
O  
R  
R



2019  
AUG



1. PREPARE



2. ANALYZE



3. FRAME



4. EXPLORE



5. RECOMMEND

2020  
JAN

# EXPLORE

DEVELOP  
DISTRICT-WIDE  
PROJECT LIST

**STEERING  
COMMITTEE  
WORKSHOP #3  
(11/26)**

DEVELOP  
PROJECT LIST  
DATABASE

DEVELOP AND  
VET INITIAL LIST  
OF PROJECT  
PRIORITIES

S  
S  
E  
C  
R  
R  
R

SAFETY

SMALL ADMINISTRATION

SMALL LIBRARIES & MAKER SPACE NEEDS

SMALL CAFETERIAS & MPR

SHADE STRUCTURES FOR PLAYGROUNDS, LUNCH AND DROP-OFF/ PICK-UP WAITING AREA

STEAM EDUCATION AND INTEGRATION

FLEXIBLE CLASSROOM NEEDS

21ST CENTURY LEARNING ENVIRONMENTS - POWER & DATA

OUTDOOR LEARNING ENVIRONMENTS

AGING PORTABLES

REWORK LAYOUT FOR DROP-OFF/ PICK-UP

DOOR HARDWARE UPDATES

ADA SLOPE & DRAINAGE ISSUES

ROOF LEAKS & EXTERIOR BUILDING FACADE DETERIORATION

RESTROOM AND LOCKER ROOM UPGRADES

FENCING UPDATES & CONSOLIDATION

RESEAL & RESURFACE AC HARDCOURTS & PARKING

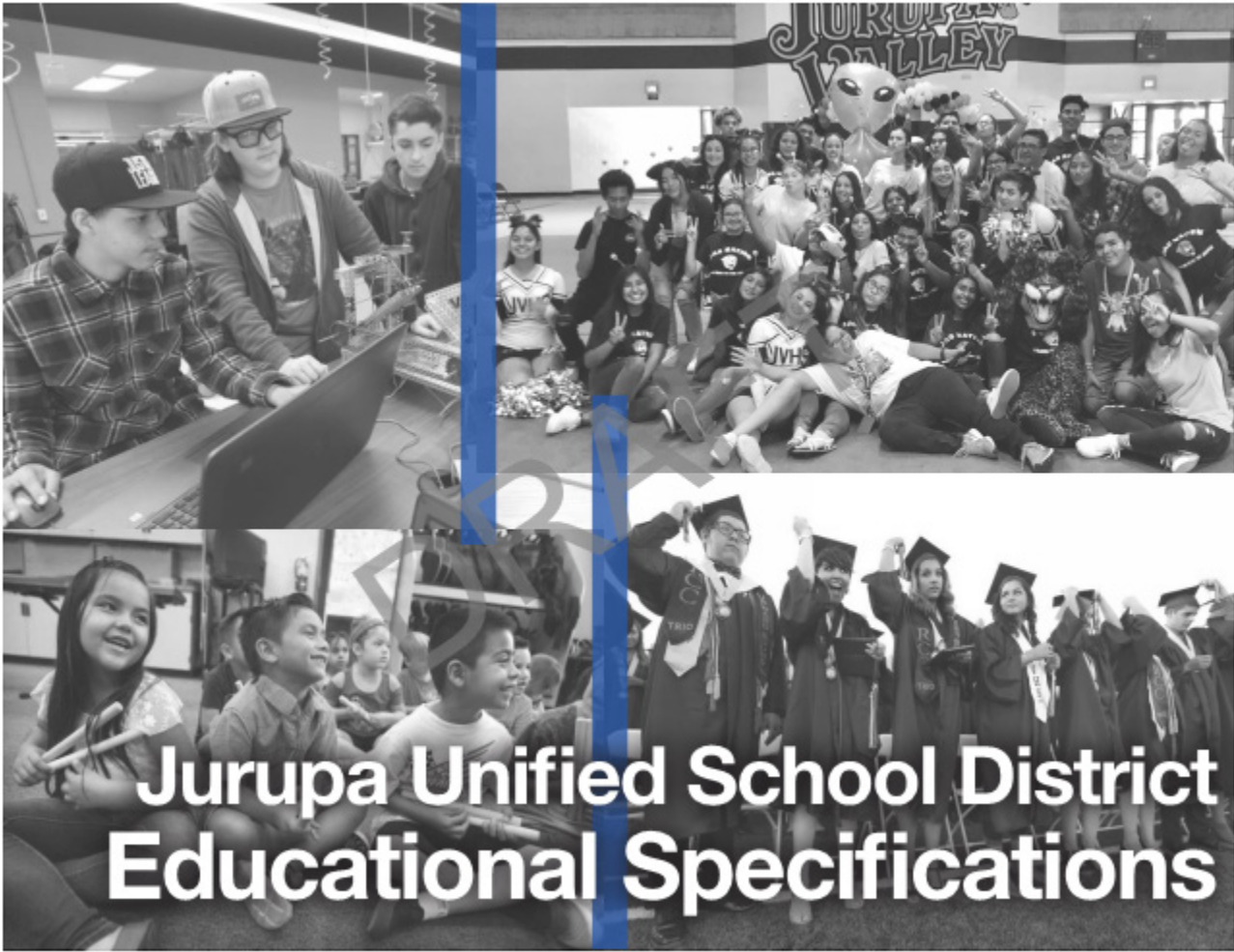
DESIGNATED KINDER RESTROOMS

WINDOWS FOR DAYLIGHT

CAMPUS WIDE LANDSCAPING & OUTDOOR GARDEN AREAS

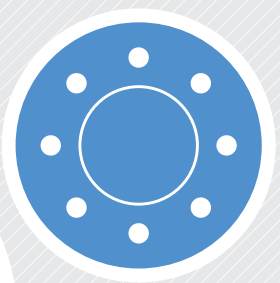
OUTDOOR FITNESS AREAS





# Jurupa Unified School District Educational Specifications

S  
C  
E  
S  
P  
E  
C  
S  
E  
D  
E



THANK  
YOU!

